



SAVOY PALACE









MEETING ROOMS LAYOUT

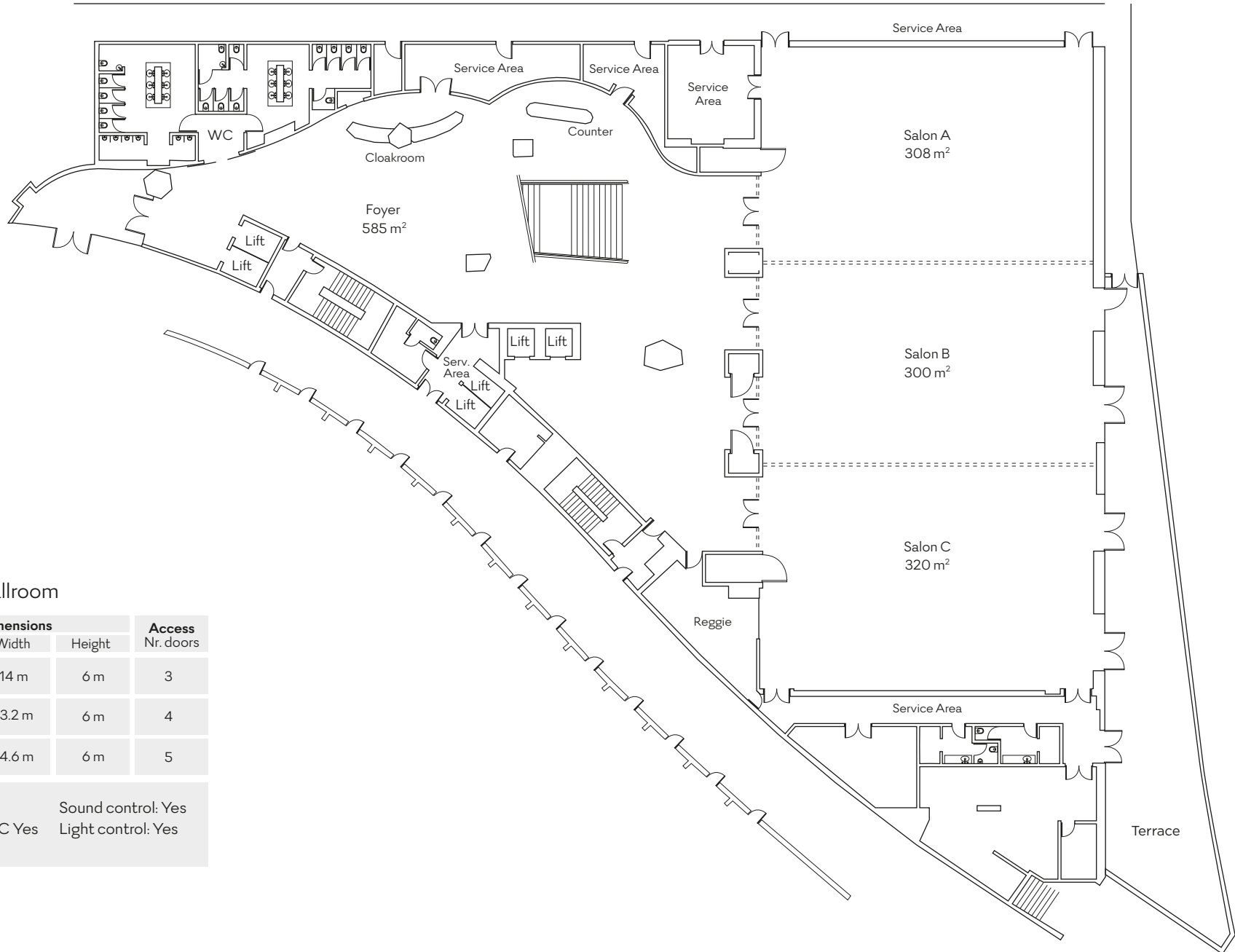
events@savoysignature.com | www.savoysignature.com



Floor		Area sq. m	Dimensions (m)	Height	Capacity							
					Theatre	Classroom	U Shape	Boardroom	Cabaret	Cocktail	Buffet	Menu
0	Grand Ballroom	928	22 x 41.8	6	1400	540	280	300	360	1200	500	600
	Ballroom Salon A	308	22 x 14	6	320	180	90	100	110	330	150	170
	Ballroom Salon B	300	22 x 13.2	6	320	180	90	100	110	330	150	170
	Ballroom Salon C	320	22 x 14.6	6	320	180	90	100	110	330	150	170
	Ballroom Salon A+B	608	22 x 27.6	6	640	360	180	200	220	660	300	340
	Ballroom Salon B+C	620	22 x 27	6	640	360	180	200	220	660	300	340
	Grand Ballroom + Foyer	1513	-	-	-	-	-	-	-	1400	650	680
	Foyer	585	-	-	-	-	-	-	-	200	-	-
1	Bellevue Hospitality Suite	266	18.4 x 13.4	3	-	-	-	-	-	180	100	120
	Bellevue Meeting Room 1	134	7.7 x 16.7	3	70	50	24	28	40	60	50	60
	Bellevue Meeting Room 2	132	10.7 x 13.4	3	70	50	24	28	40	60	50	60
	Monumental Boardroom 1	45	7.5 x 5.4	3	30	14	14	16	-	-	-	-
	Monumental Meeting Room 2	43	6 x 5.3	3	26	14	12	14	-	-	-	-
	Monumental Meeting Room 3	42	7.5 x 5.4	3	30	14	14	16	-	-	-	-
	Monumental Meeting Room 4	47	7.5 x 5.4	3	30	14	14	16	-	-	-	-
	Monumental Meeting Room 5	66	11.8 x 5.3	3	60	32	18	28	-	-	-	-
16	Boardroom - Jacarandá	100	16.5 x 5	3	-	-	-	24	-	-	-	24



Floor		Area sq. ft	Dimensions (ft)	Height	Capacity							
					Theatre	Classroom	U Shape	Boardroom	Cabaret	Cocktail	Buffet	Menu
												
0	Grand Ballroom	9 989	72.17 x 137.13	18	1400	540	280	300	360	1200	500	600
	Ballroom Salon A	3 315	72.17 x 45.93	18	320	180	90	100	110	330	150	170
	Ballroom Salon B	3 229	72.17 x 43.30	18	320	180	90	100	110	330	150	170
	Ballroom Salon C	3 444	72.17 x 47.90	18	320	180	90	100	110	330	150	170
	Ballroom Salon A+B	6 544	72.17 x 90.55	18	640	360	180	200	220	660	300	340
	Ballroom Salon B+C	6 674	72.17 x 88.58	18	640	360	180	200	220	660	300	340
	Grand Ballroom + Foyer	16 286	-	-	-	-	-	-	-	1400	650	680
	Foyer	6 297	-	-	-	-	-	-	-	200	-	-
1	Bellevue Hospitality Suite	2 863	60.36 x 43.96	9	-	-	-	-	-	180	100	120
	Bellevue Meeting Room 1	1 442	25.26 x 57.79	9	70	50	24	28	40	60	50	60
	Bellevue Meeting Room 2	1 421	35.10 x 43.96	9	70	50	24	28	40	60	50	60
	Monumental Boardroom 1	484	24.60 x 17.71	9	30	14	14	16	-	-	-	-
	Monumental Meeting Room 2	462	19.68 x 17.38	9	26	14	12	14	-	-	-	-
	Monumental Meeting Room 3	452	24.60 x 17.71	9	30	14	14	16	-	-	-	-
	Monumental Meeting Room 4	506	24.60 x 17.71	9	30	14	14	16	-	-	-	-
	Monumental Meeting Room 5	710	38.71 x 17.38	9	60	32	18	28	-	-	-	-
16	Boardroom - Jacarandá	1 076	54.13 x 16.40	9	-	-	-	24	-	-	-	24



Floor 0 Grand Ballroom

	Dimensions			Access Nr. doors
	Length	Width	Height	
A	22 m	14 m	6 m	3
B	22 m	13.2 m	6 m	4
C	22 m	14.6 m	6 m	5

Air condition: Yes Sound control: Yes
 Natural daylight: B, C Yes Light control: Yes
 Blackout: Yes



Technical Information
Grand Ballroom

Total Area 928 m²

Interior Doors
Dimensions (m)

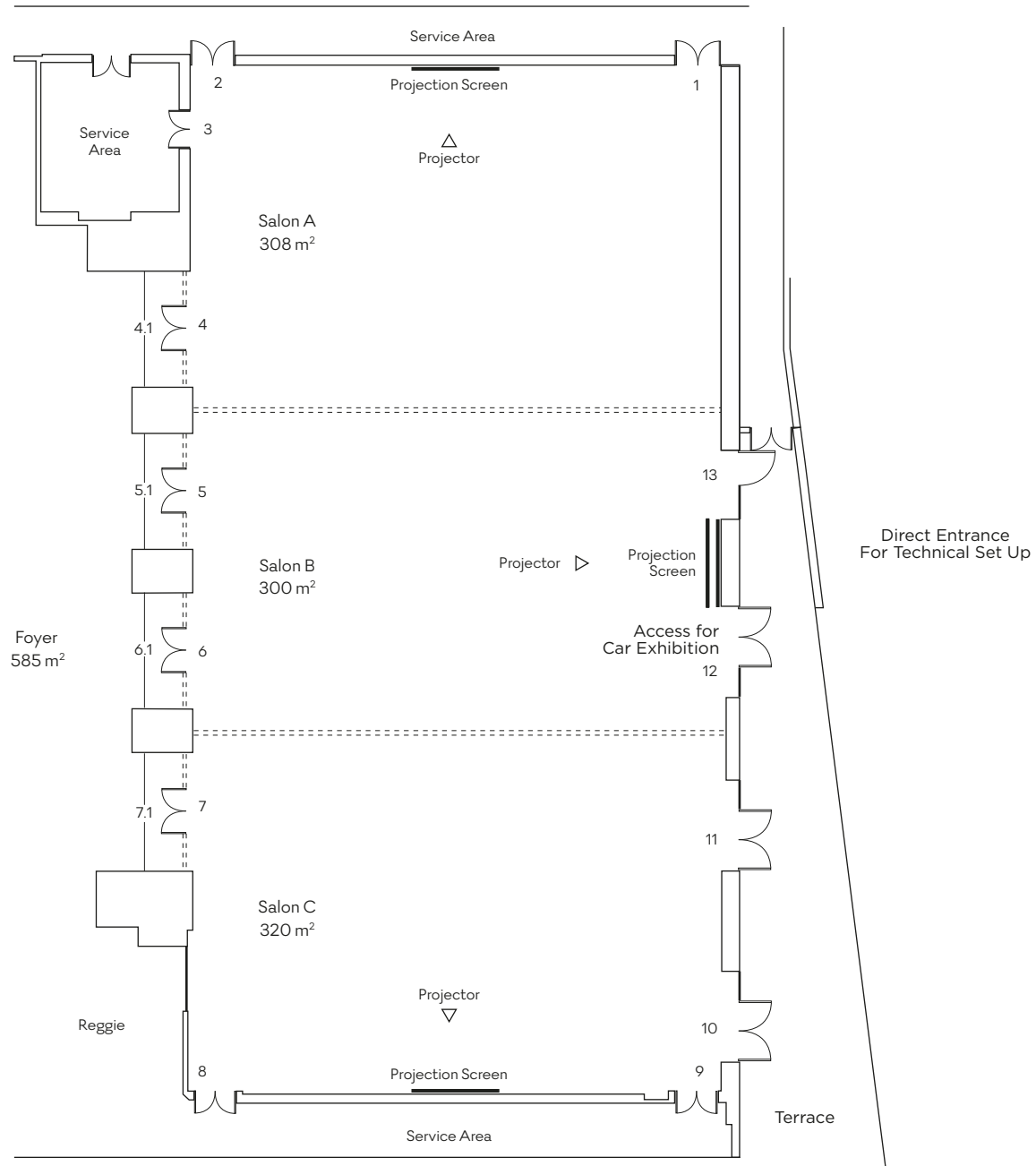
Length Height

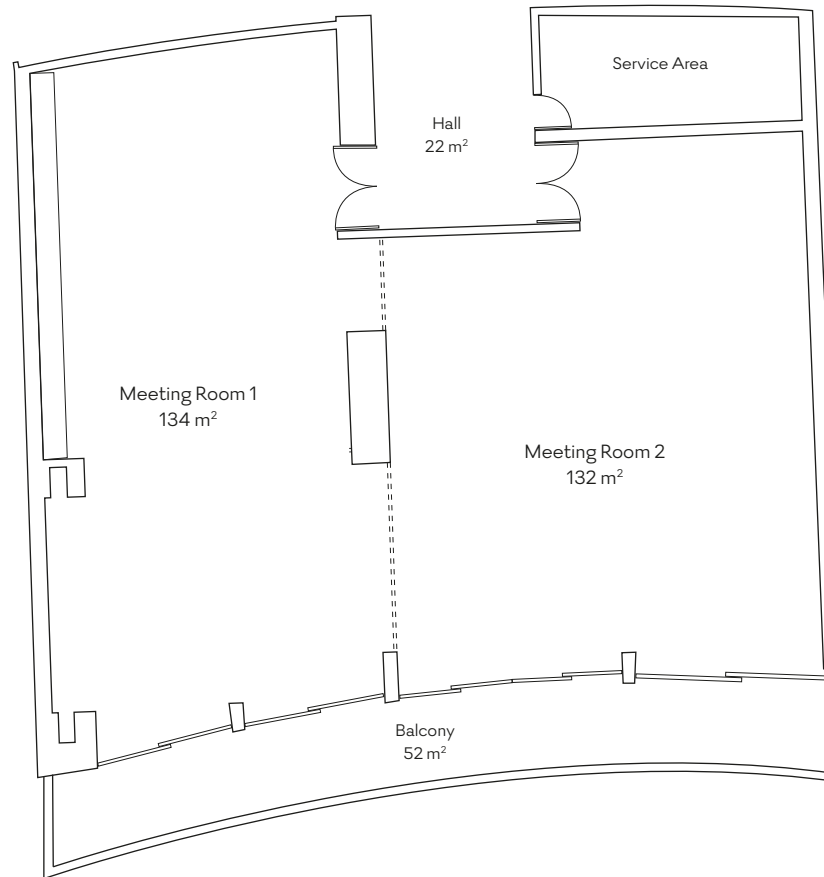
1	1.7	2.4			
2	1.7	2.4			
3	1.7	2.4			
4	1.8	2.5	4.1	4.7	4.5
5	1.8	2.5	5.1	4.7	4.5
6	1.8	2.5	6.1	4.7	4.5
7	1.8	2.5	7.1	4.7	4.5
8	1.7	2.4			
9	1.7	2.4			

Exterior Doors
Dimensions (m)

Length Height

10	2.3	3.4
11	2.3	3.4
12	2.3	3.4
13	1.3	3.4

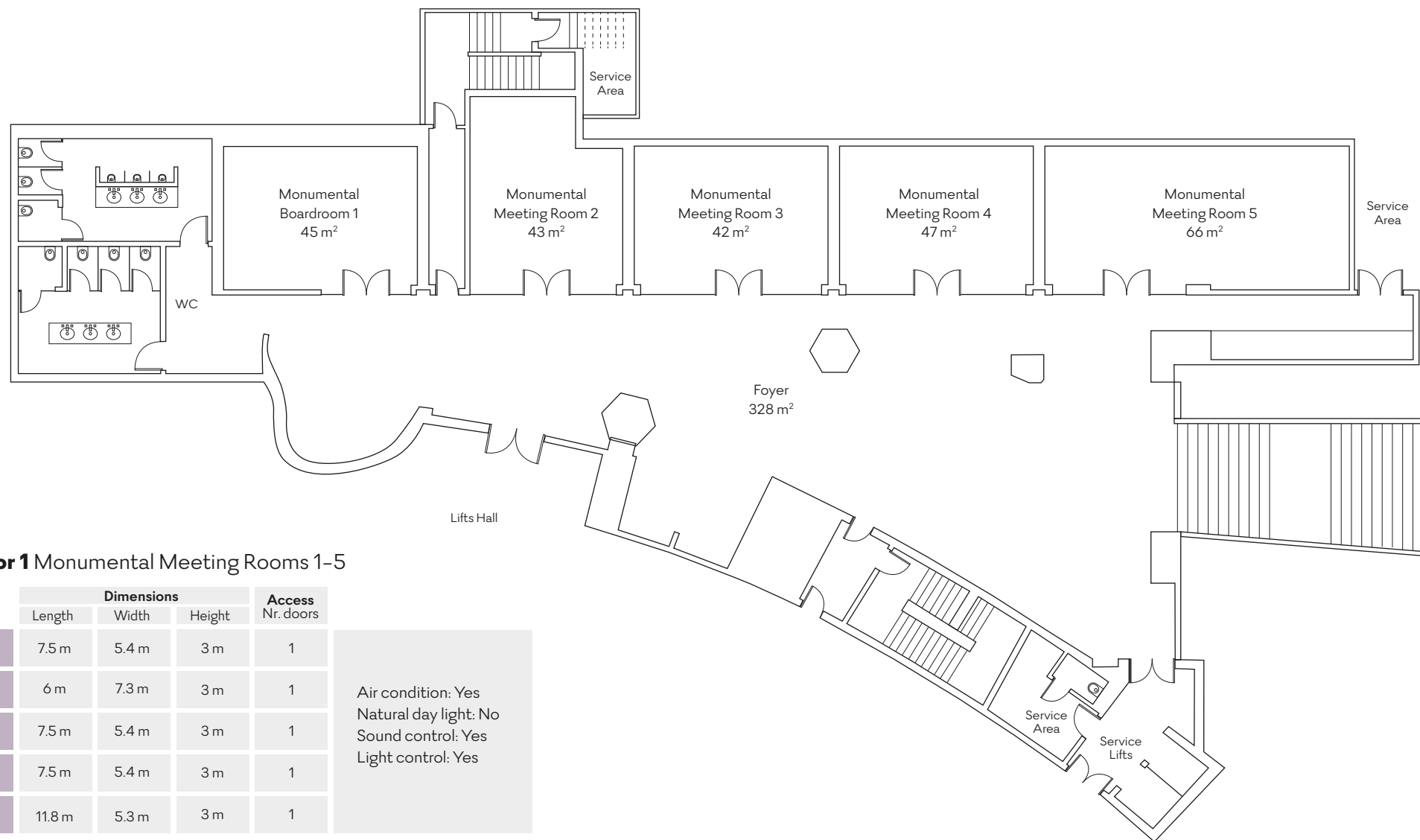




Floor 1 Bellevue Hospitality Suite

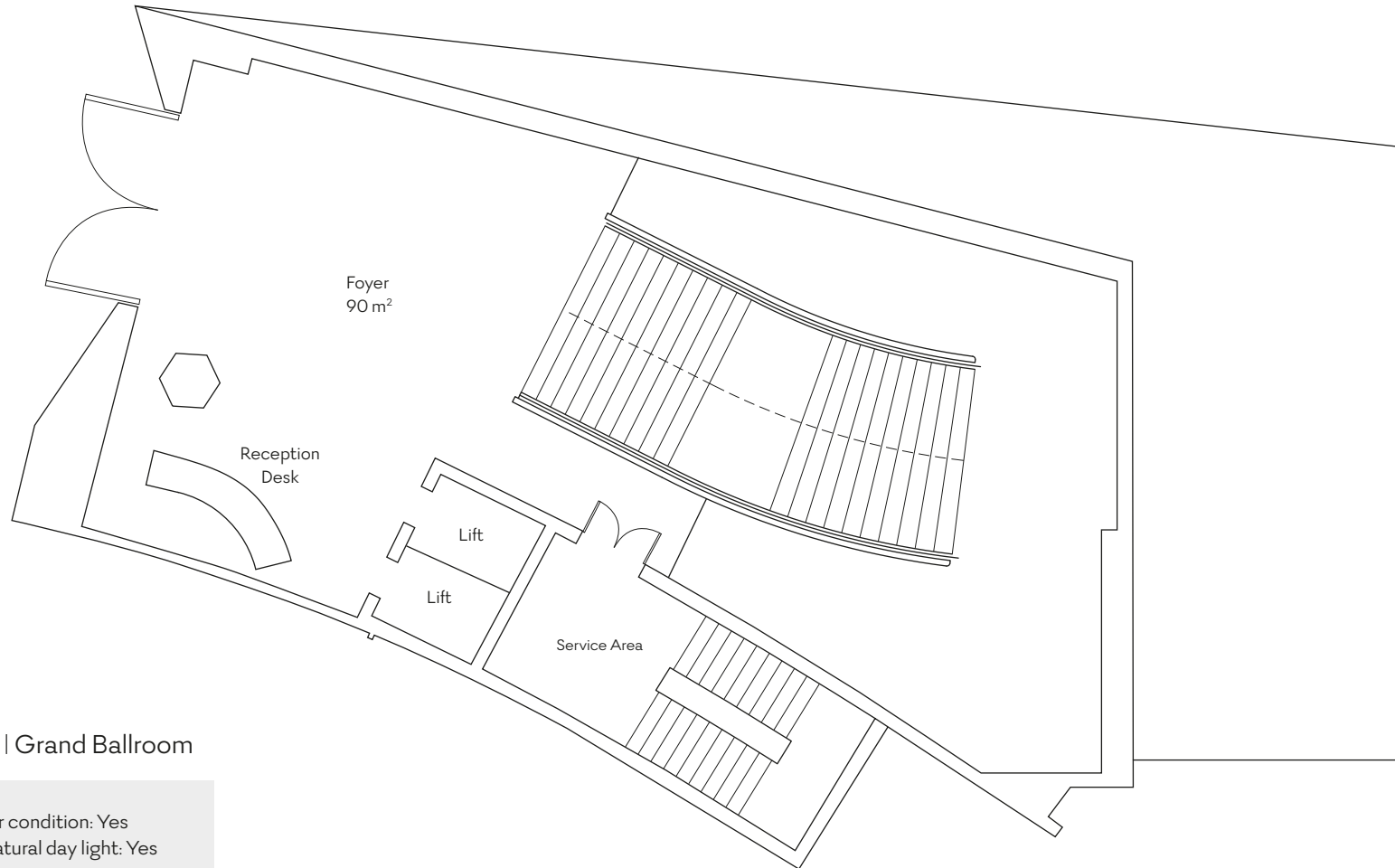
	Dimensions			Access Nr. doors
	Length	Width	Height	
1	7.7 m	16.7 m	3 m	1
2	10.7 m	13.4 m	3 m	1

Air condition: Yes Sound control: Yes
Natural day light: Yes Light control: Yes
Blackout: Yes



Floor 1 Monumental Meeting Rooms 1-5

	Dimensions			Access Nr. doors	
	Length	Width	Height		
1	7.5 m	5.4 m	3 m	1	Air condition: Yes Natural day light: No Sound control: Yes Light control: Yes
2	6 m	7.3 m	3 m	1	
3	7.5 m	5.4 m	3 m	1	
4	7.5 m	5.4 m	3 m	1	
5	11.8 m	5.3 m	3 m	1	



Floor 2 Main Entrance | Grand Ballroom

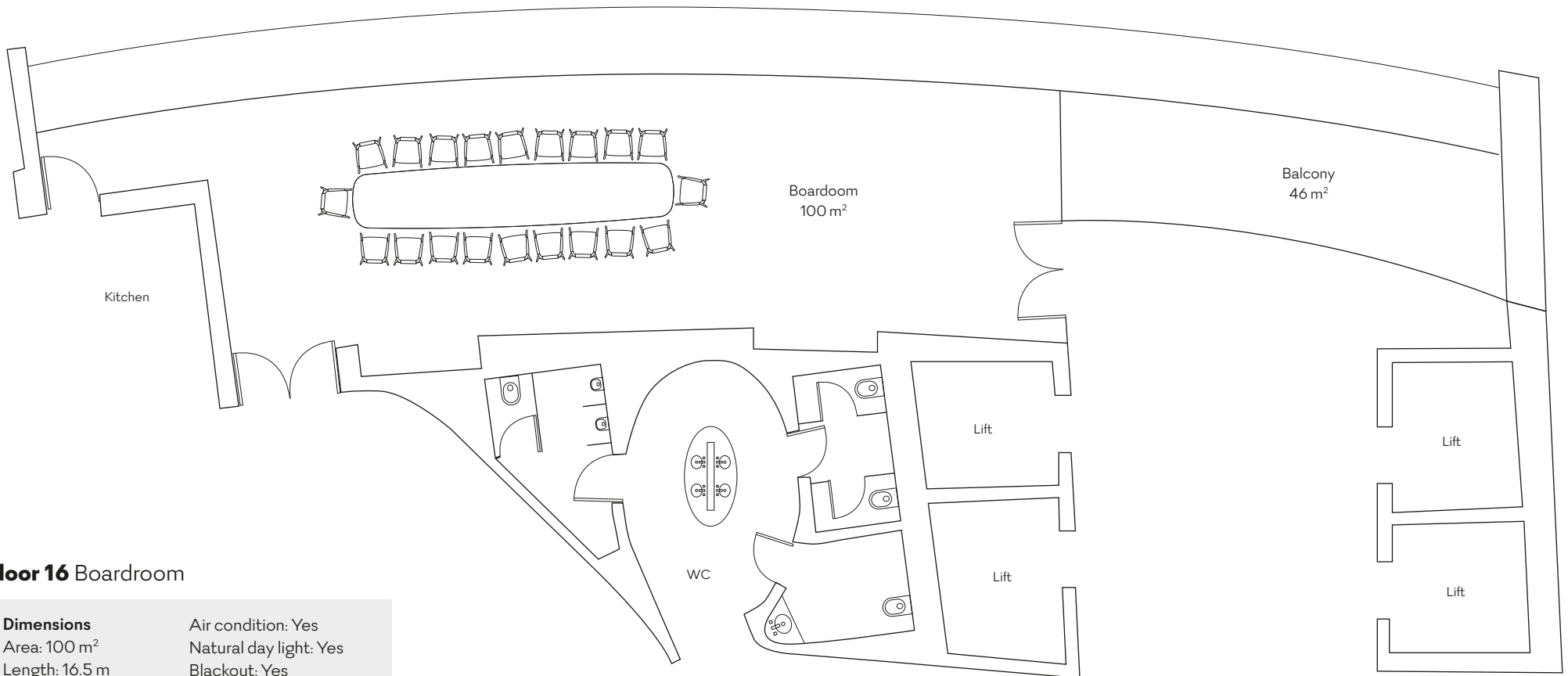
Dimensions

Area: 90 m²
Height: 4.9 m

Accesses

Nr. doors: 1

Air condition: Yes
Natural day light: Yes



Floor 16 Boardroom

Dimensions

Area: 100 m²
Length: 16.5 m
Width: 5 m
Height: 3 m

Accesses

Nr. doors: 2

Air condition: Yes
Natural day light: Yes
Blackout: Yes
Sound control: Yes
Light control: Yes

Jacarandá
Lounge & Club